



X-TENT

MANUAL

English

If you need any support with your product please contact us at:
productsupport@gugaribas.com.br

ENGLISH VERSION

INTRODUCTION

This adapter is designed to be used in the GR Holster for Pistol.

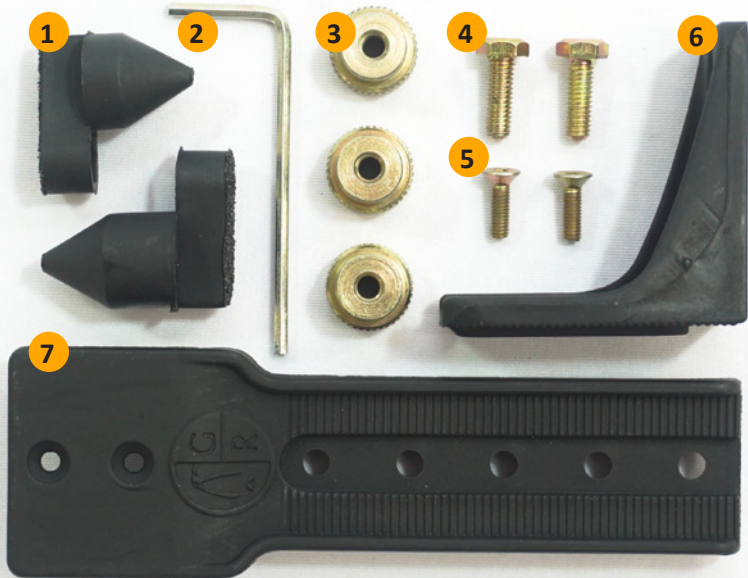
The following walkthrough should be done after your holster is already adjusted to your pistol. It is important that this is done in advance, otherwise the settings will not be effective.

When making adjustments on your holster make sure you are in a safe environment and ensure that your gun is empty and unloaded.

To access information about our manuals on-line, visit
<http://gugaribas.com.br/en/manuals>

PARTS

1. pointers (2);
2. 2mm allen keys;
3. t-nuts (3);
4. hex nut M4X16 (2);
5. hex nut M3X10 (2);
6. L-shaped support;
7. shaft (1).



1. Set your holster for your pistol using the manual that came with it (the GR pistol holster manual).

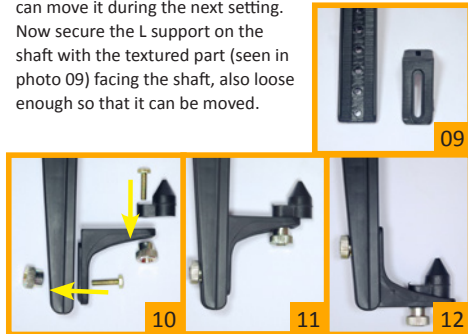
2. With the adjustment made, remove the front support (shown in photo 01) and the two screws below it using the 2mm allen key (photos 03 and 04). Put them aside and store them.

3. Insert the shaft into the gap left by the front support as in photo 05.

4. Use the two screws M3x10 (item 4 of the parts) to hold the shaft in the holster (photos 06, 07, 08).



5. Next, attach one of the pointers in the L support with the M4x16 screw using one of the nuts (photo 10) so that it is loose enough so you can move it during the next setting. Now secure the L support on the shaft with the textured part (seen in photo 09) facing the shaft, also loose enough so that it can be moved.



Note 1: For better fit, depending on the barrel length of your pistol, the pointer can be placed on the L-bracket facing up (photo 11) or down (photo 12). The different pointer sizes can also be exchanged for the same reason. During the next adjustment you can make these changes if deemed necessary.

6. Put your pistol in the holster and slide the L support vertically and the pointer horizontally until it reaches the end of the barrel (as in photo 14).

If necessary you can change the pointer for the different size that came along with the pieces. You can also change the bracket position as mentioned in Note 1 of the previous page and seen in the photos 11 and 12.



Note 2: to fit your pistol in the holster using the X-TENT, always support the pipe first and only then support the guard (photo 15).

When you set the position make sure the pointer's and L support's nuts are securely tighten.



Verification

Check the adjustment by supporting the barrel on the pointer (photo 15) and lowering the gun into the holster (with the lock lever in the off position). If the internal lock holster trigger normally allowing you to then turn the lock lever, your setting is completed.

CONGRATULATIONS!

Your pistol GR holster X-TENT
is now ready for use.