

MAGAZINE POUCH

MANUAL



If you need any support with your
product please contact us at:
productsupport@gugaribas.com.br

SUMMARY

STANDARD MAGAZINE POUCH PARTS	6
1. Installation on the belt	8
1.1 Attach the Velcro	8
1.2. Put the hanger on the belt	9
2. Securing the mag pouch on the hanger and adjusting the height	11
3. Angular adjustment	13
4. Finalization:	15
4.1 Adjustment of the width of the magazine pouch and the tension of the draw	15
4.2 Checking	15
4.3 Transport and storage	15
5. Optional Changes	17
5.1. Opening	17
5.2. Changing the position of the magazine pouch from parallel to perpendicular to the belt	18
5.3. Changing the magazine pouch from right- to left-handed	20
5.4. Using (or not) inserts	22
5.5. Closing	24

ENGLISH VERSION

INTRODUCTION

The magazine pouch is one of our most traditional and well-known products, principally because it is extremely resistant and durable, and is suitable for all types of magazine. Follow the steps in this manual in order to get the most out of your new product.

Adjusting your holster will take approximately 20 minutes.

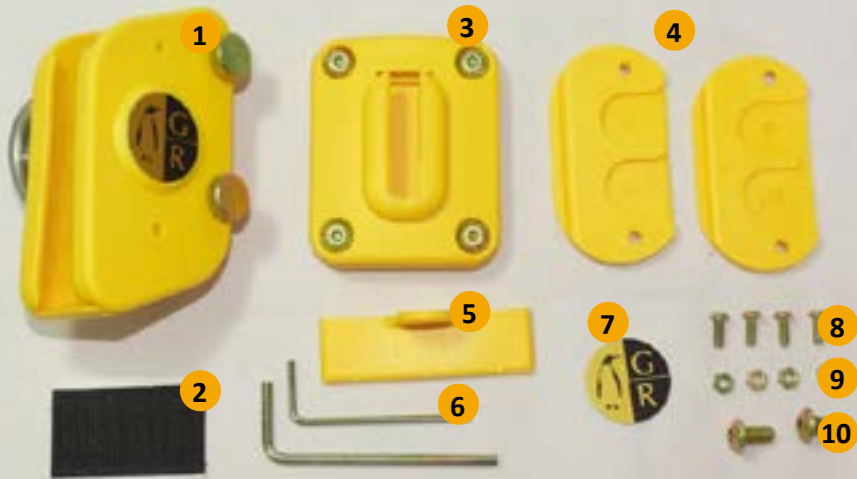
For your own safety, follow the instructions carefully.

To access information about our
manuals on-line, visit:

<http://gugaribas.com.br/en/manuals>

STANDARD MAGAZINE POUCH PARTS

1. magazine pouch
2. velcro adhesive
3. hanger
4. lateral inserts (2 units)
5. frontal insert
6. 2mm and 3mm Allen keys
7. sticker with the GR logo
8. M3x8 bucket head socket screw (4 units)
9. M3 hex nut (4 units)
10. M5x10 bucket head socket screw (2 units)



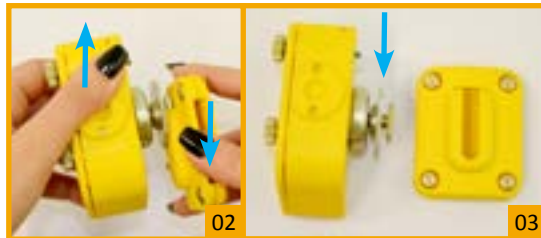
1. INSTALLATION ON THE BELT

1.1 Attach the Velcro

Along with the parts of your magazine pouch, you will have received a piece of adhesive Velcro that should be attached to the back of the hanger. This will ensure that the magazine pouch sticks firmly to the belt. To set it, remove the backing and attach it vertically or horizontally, to your preference, as in photo 01.



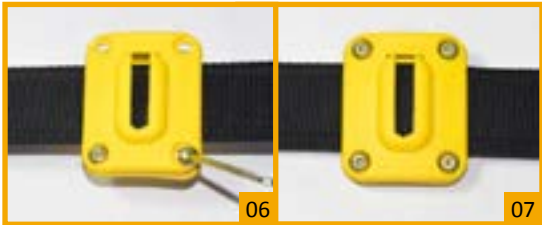
1.2. Put the hanger on the belt



Release the magazine pouch from the hanger by turning the tightening disc, as indicated at photo 03, loosening it and sliding both parts in opposite directions (photo 02) until they become apart (photos 03).



Next, release the four screws in the hanger using the 3mm Allen key (photo 04). The hanger will be in two parts (photo 05).



Put the belt between the two parts, fit the two lower screws (photo 06), slide the hanger along the belt until it is in the preferred position for you, then fit the other two screws to fix the hanger in the belt (photo 07).

Do not tighten these screws. We will soon adjust the position again.

2. SECURING THE MAG POUCH ON THE HANGER AND ADJUSTING THE HEIGHT



Put the Standard Magazine Pouch back on the hanger (photo 09) and adjust its height in relation to the belt for your best draw.

To adjust the height of the Standard Magazine Pouch in relation to the belt, simply loosen the tightening disc (shown in photo 08) and position it to your desired height.



Put the external belt on your waist to check if the position of the hanger is adequate (photo 10).



Now with the magazine pouch attached to the hanger, take advantage of the fact that the screws are still loose (as was left at stage 1.2), and move it's position if necessary (photo 10 to 11). When they are adequately positioned, tighten the four screws in the hanger (photo 12).

Remember to always check the safety rules for your division. When in the belt, the magazine should always have a standard distance and position, which will depend on the division in which you compete. Ensure that your adjustment adheres to these rules.

3. ANGULAR ADJUSTMENT



Once you have the belt on your waist, with the magazine pouch fixed on the hanger, access the screws holding the kneecap (photo 13) loosening it bit by bit with the **3mm Allen key (ref.: p.05, photo 00, item 6)**.

Loosen it enough to move the angle of the kneecap and, consequently, change the angle of the magazine pouch in relation to the hanger.

Change the angle of the equipment to your preference (photo 14). //



Test the position of the magazine for you draw.

Re-do stage 2 and 3 if you feel necessary.

4. FINALIZATION:

4.1 Adjustment of the width of the magazine pouch and the tension of the draw

Using external screws, indicated in photo 16, you can reduce or increase the width to fit your **double stack** magazine (for **single stack** magazines, see stage 5.4).

Using the same screws (and now testing with your magazine attached) you can make it more or less compressed, thus modifying the draw, leaving you with more tension or less tension, respectively.

4.2 Checking

When setting the position, ensure that the four **hanger screws** are tight and the internal screws that hold the kneecap and the **tightening disc** as well.

4.3 Transport and storage

One of the GR Magazine Pouch's feature is that it can be removed from the belt without losing the adjustments that you just made.

For this, loosen the **tightening disc** and skid your pouch up removing it from the handle. This way you can store the magazine pouches (and the holster) separately from the belt, facilitating storage as well as transport of your equipment.

(To use the same handle on the belt with different pouches, see step 7).

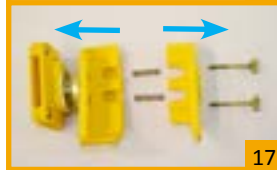
ATTENTION

The following steps are OPTIONAL adjustments that you may choose to (or not to) do in your magazine pouch.

We suggest that you read each stage to decide whether or not these changes apply to you.

5.OPTIONAL CHANGES

5.1. Opening



The following adjustments made in this manual are generally done in the inner part of the Standard Magazine Pouch. To access the internal adjustments, open the equipment by completely releasing the **opening adjusting screws** found in the front of the Standard Magazine Pouch (photo 16). Put them to the side with the springs seen in photo 17. //

We will call the left side female and the right side male.

5.2. Changing the position of the magazine pouch from parallel to perpendicular to the belt



PARALLEL

PERPENDICULAR

ATTENTION! Adjusting the Standard Magazine Pouch to this position means it will not be possible to install a Frontal Magnetic Magazine Pouch (stage 6)

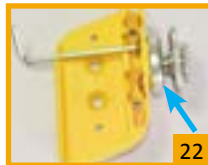


20

21

To alter the magazine pouch position, fully release the screws in the female side indicated in photo 20.

Use the **3mm Allen key (ref.: p.05, photo 00, item 6)** to ensure that the lateral holes are unobstructed (photo 21).



22

Next, fix the kneecap to the side shown in photo 22, and substitute the removed screws by the **M5x10 bucket head socket screw (ref.: p.05, photo 00, item 10)**.

Next, follow stage 5.5 to close the Standard Magazine Pouch.

5.3. Changing the magazine pouch from right- to left-handed



The magazine pouch comes ready for right-hand use. To invert the magazine pouch for left-hand take the female side and fully remove the screws holding the **kneecap** shown in photo 25.

Remove the GR logo using of the **Allen keys (ref.: p.05, photo 00, item 6)** to push it into the holes shown in photo 26.

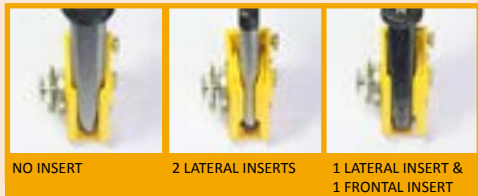
Once you have done this just reverse sides putting the kneecap removed from the female side on the male side (photo 27), then place the **logo** on the female side of the magazine pouch.

Remove the protective sticker from the extra logo that came with the tools and stick it to the rounded area, as in photo 28.

You may like to add two drops of cyanoacrylate glue on the back of the logo to ensure that the logo does not become unstuck. Next, follow stage 5.5 to close the Standard Magazine Pouch.//



5.4. Using (or not) inserts



Adjusting the width of the magazine pouch to fit a **double stack** magazine is simple. You only need to tighten or loosen the external adjusting screws indicated in photo 16, as done in stage 4.1.

For **single stack** magazines, you need to use the inserts that came with the packaging. If this is required for your weapon, follow these next steps:

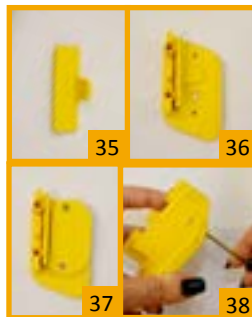


Get the the **lateral insert** (ref.: p.05, photo 00, item 4) (photo 32) and insert two **M3 hex nuts** (ref.: p.05, photo 00, item 09). Position one of the **lateral inserts** in one of the sides, or in each of the sides

(photo 33), depending on the width of your magazine. Tighten the hex nuts from the outside of the magazine pouch, using the **M3 bucket head socket screws** (ref.: p.05, photo 00, item 8) and the **2mm Allen key** (ref.: p.05, photo 00, item 06) (photo 34).



If it is also necessary to reduce the space between the magazine and the front part of the Standard Magazine Pouch, place the **frontal insert** (ref.: p.05, photo 00, item 5) as shown in photo 35 and 36, then the lateral insert (at least one lateral insert is essential for this adjustment) with the **M3 hex nuts** (photo 32 and 37). Follow the same steps as the previous adjustments, tightening the **M3 button head socket screws** from the external side of the Standard Magazine Pouch (photo 38).



Next, follow stage 5.5 to close the Standard Magazine Pouch. //

5.5. Closing



When you have finished the optional adjustments, close the pouch by putting the female and male sides together, then adding the springs (shown in photo 39) and the opening adjusting screws (photo 40).

Tighten to finish the adjustment. //



CONGRATULATIONS!

Your magazine pouch
is now ready for use.

